



Hygienic Wash Stations, Pods & Doorsets

**Flush-vision doorsets: the ultimate bacteria defence**

# Hygidoor

- 64 **Introduction to Hygidoor**
- 65 **Why Hygidoor?**
- 66 **Hygidoor styles**
- 68 **Hygidoor features**
- 69 **Hygidoor frame types**
- 70 **Hygidoor core types**
- 72 **Hygidoor vision panels**
- 73 **Hygidoor options**
- 74 **Hygidoor colours & finishes**

# Introduction to Hygidoor

A solid, resistant and resilient core forms the heart of Hygidoor. Fully encapsulated in Trovex hygienic PVC, with the Hygiglaze™ flush glazing system, Hygidoor is supplied complete with its own frame, ensuring that installation is accurate and straightforward.

A wide choice of options make Hygidoor the clear choice for specifiers and contractors. Choose your style and finishes, and create exactly what you need in our step-by-step Build-a-Door™ section (see page 84). Offering the full range of Trovex colours and finishes, and options for vision panels, Hygidoor is designed to suit applications in healthcare and pharmaceutical environments, as well as food production and leisure.

When schedules are tight, you need a company that can deliver - on time, every time. Hygidoors are available in a select, specific range ready for fast delivery without delay.

**Call 01707 254 170**  
to speak to a member of the technical team.

“Hygienic safety is an important issue. That’s why Trovex is committed to providing you with the most advanced prefabricated solutions for every challenge.”

# Why Hygidoor?

## Hygienic flush glazing

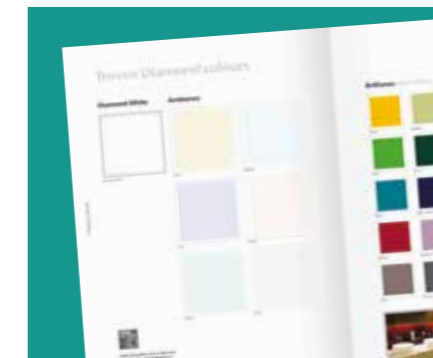
Featuring Hygiglaze™, the doorset holds the key to hygienic safety - every passage of personnel involves contact with the door or frame, potentially compromising the sterility of the area. Hygidoor brings the needed protection to this high traffic zone, with robust, practical and attractive Hygiglaze™ flush vision panels and the option of Activ:ion anti-bacterial finish.

- › High traffic zone
- › Multi-user contact
- › Hygiene-sensitive area



## Q-mark certified

We’ve updated our fire accreditation so that Hygidoors comply with Exova Q Marking Scheme for Fire Door Manufacturing, which reaffirms our commitment to quality assurance and control within our Hygidoor manufacturing facility.



## Multiple options

Hygidoor is delivered pre-hung in its frame, ready to install. Simple selection and standard sizing combined with the unique Hygiglaze™ system ensures this is the obvious solution for hygienic environments.



## Ultra hygienic

When encapsulated with Trovex hygienic PVC, Hygidoor is the most effective option to minimise the entry of superbugs to hygienic environments.

# Hygidoor styles



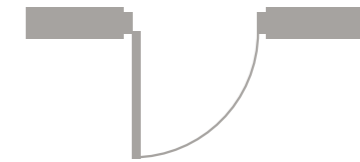
## Single door

The most common door type, and available on short lead times, single doors provide the perfect solution to everyday requirements.

### Features and benefits

- › Standard design
- › Rapid delivery available
- › Easy to install

### Opening footprint



## Double doors

For corridors and common area access, double doors offer the widest opening width and are available with vision panels as standard, and an option for double-swing hinges.

### Features and benefits

- › Maximum opening width
- › Ideal for communal areas
- › Available as double-swing

### Opening footprint



## Leaf-and-a-half

In areas where extra opening width is only an occasional need, leaf-and-a-half doorsets give you the best of both worlds: it's a single door until you need additional width.

### Features and benefits

- › Simple single door operation
- › Extra width available on demand
- › Easy to install

### Opening footprint



## Sliding

Where space is tight, sliding doors can make all the difference. Perfect where wide openings are needed.

### Features and benefits

- › No clearance needed
- › Space saving
- › Easy slide opening

### Opening footprint



# Hygidoor features

Hygidoor is supplied as a complete pre-hung doorset with many unique features.

- 1** Flush architrave style offers a combination of hygiene and aesthetics.
- 2** All Hygidoor frames are factory-mitred and bonded for on-site speed and accuracy.
- 3** Frames and doors are pre-cut for hinges for ease of installation and on-site accuracy.
- 4** Huge range of colours and finishes available. Colours can be combined on a single door using laser cutting technology for endless design opportunities.
- 5** Hygiglaze™ flush glass vision panels are standard on all Hygidoors. Hygivision integral louvres are available as an option.

Speak to a Trovex advisor for your project-tailored specification today.  
**Call 01707 254 170**



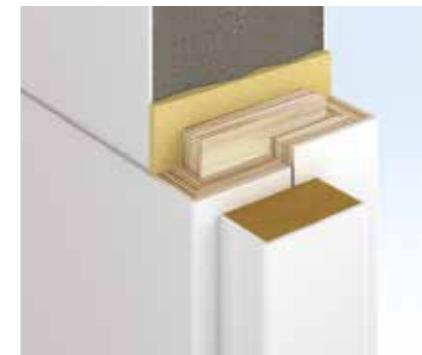
# Hygidoor frame types

Choose the standard three-piece frame for speed of installation, the extra-hygienic flush frame for easy cleaning or the double-swing frame when speedy access is critical.



## Standard three-piece frame

The standard three-piece frame incorporates an architrave style detail, enabling the existing wall surfaces to be neatly finished by the frame. In this situation, the door closes flush with the architrave.



## Extra-hygienic flush frame

The superior option for hygienic environments, flush frames offer ease of cleaning and an aesthetic appeal. With no architraves, this option allows the wall cladding to integrate almost seamlessly with the doorset, making hygienic maintenance effortless.

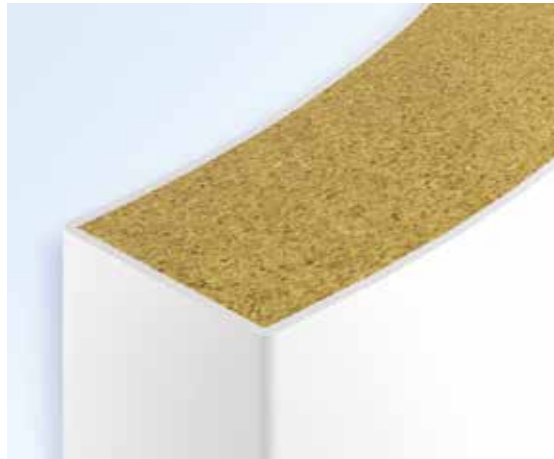


## Double-swing frame

The double-swing frame specifically suits the swing door option, with no doorstops. This is typically supplied with a pair of double doors, but can be fabricated to suit your application.

# Hygidoor core types

A choice of core types gives Hygidoor the edge in every demanding environment. Each door is carefully wrapped in Trovex hygienic PVC cladding. Chose from particulate or laminate door cores, available in non fire-rated, 30 minutes and 60 minutes.



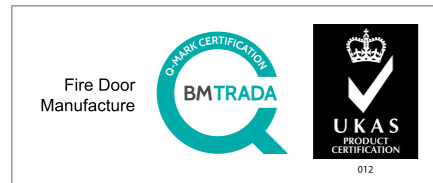
## Particle core

Putting personal safety first, Hygidoor is tested for 30 minutes and 60 minutes fire resistance for single and double doorsets with Hygiglaze™ Vision panels.



## Laminate core

A lightweight and extra moisture resistant option, the laminate core accepts all standard door hardware. Available in fire ratings 30 minutes and 60 minutes resistance.



# Hygidoor vision panels

## Hygiglaze™

With the unique flush glazing system as standard, a range of vision panel options are available including circular, square and rectangular. Rounded corners offer a sophisticated appearance, and special shapes are possible.

Trovex Hygiglaze™ double door system has been put through one of the most rigorous fire resistant tests, the FD60 fire test. The assessment test was carried out at Exova Warrington Laboratory on the Hygiglaze™ double door system which was terminated with the Hygidoor withstanding considerably more than 60 minutes under 950°C temperature.

With a choice of configurations, you can include a visual panel on a single door, double door, or leaf-and-a-half. There is a style to suit your specific requirements – a complete doorset solution.



## Hygivision panels

Providing a clear view, Hygiglaze™ vision panels can be supplied in a number of standard sizes, or manufactured to your requirements. For healthcare environments, Hygivision™ control panels provide the needed surveillance and privacy with an adjustable glazing unit.



# Hygidoor options



## Visual contrast

To assist the partially sighted, contrasting door and frame colours give a clear visual break between the door and the frame. Get creative with colour!

## Door hardware

The finishing touch is added through the choice of the right door hardware. Provided with options of a pull handle and push plate in hygienic stainless steel, other options are available to suit your project. Anti-ligature handles, locks and hinges qualify Hygidoor for the most demanding healthcare applications.

## Need something a little different?

Hygidoors can be manufactured to your specific needs. State your required size and choose from the expansive Trovex colour collections.

Email your requirements to [sales@trovex.com](mailto:sales@trovex.com) or call **01707 254 170**



# Hygidoor colours & finishes

## Diamond

Available in the full range of colours, Diamond gives your Hygidoor the most elegant appearance.

- › White
- › Ambience
- › Essence
- › Radiance
- › Brilliance

## Activ:ion

Actively combating bacteria is the key to a sterile environment. Choose Activ:ion for hygiene-critical areas, available in a select range of colours.

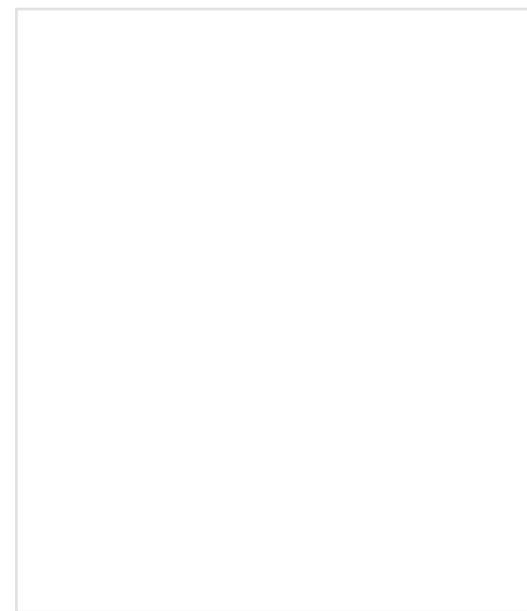
- › White
- › Ambience

## Resilience

Textured finish offers a high level of impact protection, hiding minor scratches and fending off daily knocks. Available in a select range of colours. Please call for details **01707 254 170**

- › See page 79 Hygidoor Tuff

## White Satin



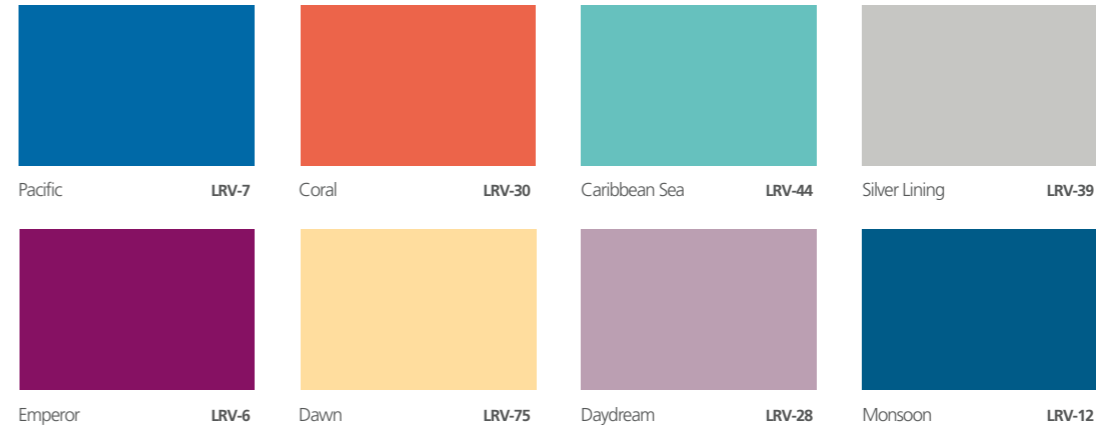
Diamond White LRV-86

## Ambience Satin



Calico LRV-71    Mystique LRV-77    Lilac LRV-67  
Orchid LRV-76    Pistachio LRV-81    Stone LRV-68  
Dove LRV-59    Almond LRV-73    Azure LRV-78

## Radiance Satin



Pacific LRV-7    Coral LRV-30    Caribbean Sea LRV-44    Silver Lining LRV-39  
Emperor LRV-6    Dawn LRV-75    Daydream LRV-28    Monsoon LRV-12

## Brilliance High Gloss



Energy LRV-43    Meadow LRV-45    Limelight LRV-61    Avocado LRV-37    Moss\* LRV-25  
Clover LRV-28    Forest\* LRV-4    Jewel LRV-49    Summer LRV-30    Petrol LRV-16  
Lily LRV-56    Candy LRV-18    Amber LRV-17    Stamina LRV-7    Fantasy LRV-16  
Bordeaux\* LRV-4    Titanium LRV-18    Chestnut\* LRV-2    Panther LRV-1    White Hot LRV-85

Limitations in the reprographics process mean absolute colour accuracy cannot be guaranteed. Where colour matching is critical, a sample of the material can be provided on request.

\*NON STOCK COLOURS, could be subject to a minimum order quantity and increased delivery time.

## Essence Satin

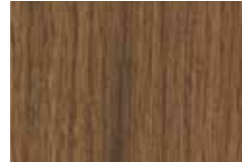
Available from stock.



Majestic Oak



Deep Walnut



Pacific Walnut



Provincial Plum



Fresh Maple



Regal Rosewood

Available to order.



Warm Beech



Natural Oak



Truffle Beech



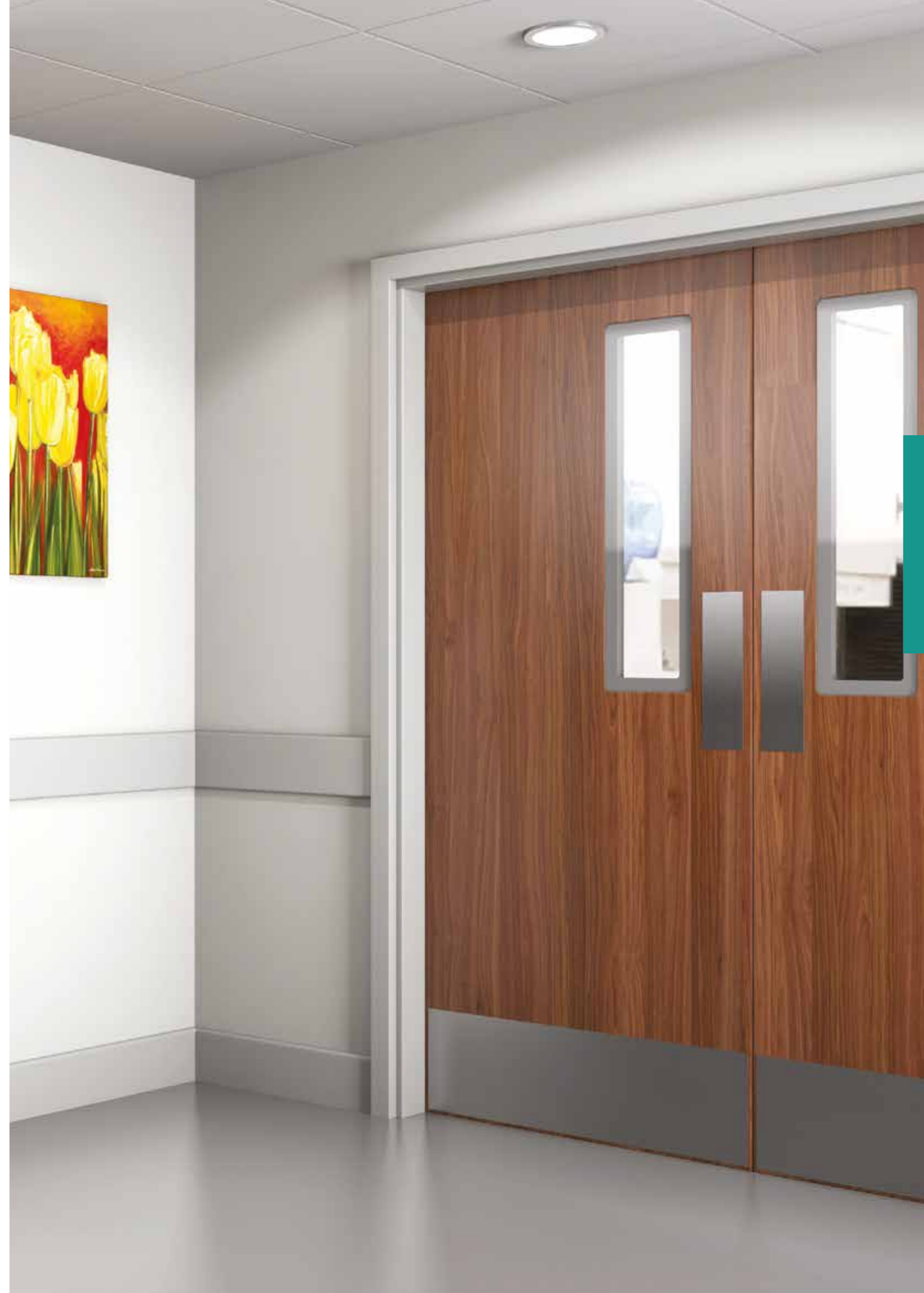
Sand Beech



Gabon Ebony



Smoked Elm



Limitations in the reprographics process mean absolute colour accuracy cannot be guaranteed. Where colour matching is critical, a sample of the material can be provided on request.

\*NON STOCK COLOURS, could be subject to a minimum order quantity and increased delivery time.