



Hygienic Wash Stations & Doorsets

**Flush-vision doorsets: the ultimate bacteria defence**

# Hygidoor

- 52 **Introduction to Hygidoor**
- 53 **Why Hygidoor?**
- 54 **Hygidoor styles**
- 56 **Hygidoor features**
- 57 **Hygidoor frame types**
- 58 **Hygidoor core types**
- 60 **Hygidoor glazing**
- 61 **Hygidoor options**
- 62 **Hygidoor colours & finishes**
- 64 **Build-a-Door™**

# Introduction to Hygidoor

A solid, resistant and resilient core forms the heart of Hygidoor. Fully encapsulated in Trovex hygienic PVC, with the Hygiglaze™ flush glazing system, Hygidoor is supplied complete with its own frame, ensuring that installation is accurate and straightforward.

A wide choice of options make Hygidoor the clear choice for specifiers and contractors. Choose your style and finishes, and create exactly what you need in our step-by-step Build-a-Door™ section (see page 64). Offering the full range of Trovex colours and finishes, and options for vision panels, Hygidoor is designed to suit applications in healthcare and pharmaceutical environments, as well as food production and leisure.

When schedules are tight, you need a company that can deliver - on time, every time. Hygidoors are generally available from stock ready for prompt delivery to site.

**Call 01707 254 170**

to speak to a member of the technical team.

“Hygienic safety is an important issue. That’s why Trovex is committed to providing you with the most advanced prefabricated solutions for every challenge.”

## Why Hygidoor?

### Hygienic flush glazing

Featuring Hygiglaze™, the doorset holds the key to hygienic safety - every passage of personnel involves contact with the door or frame, potentially compromising the sterility of the area. Hygidoor brings the needed protection to this high traffic zone, with robust, practical and attractive Hygiglaze™ flush vision panels and the option of Activ:ion anti-bacterial finish.

- › High traffic zone
- › Multi-user contact
- › Hygiene-sensitive area



### Multiple options

Hygidoor is delivered pre-hung in its frame, ready to install. Simple selection and standard sizing combined with the unique Hygiglaze™ system ensures this is the obvious solution for hygienic environments.



### Ultra hygienic

When encapsulated with Trovex hygienic PVC, Hygidoor is the most effective option to minimise the entry of superbugs to hygienic environments.

# Hygidoor styles



## Single door

The most common door type, and available on short lead times, single doors provide the perfect solution to everyday requirements.

### Features and benefits

- › Standard design
- › Rapid delivery available
- › Easy to install

### Opening footprint



## Double doors

For corridors and common area access, double doors offer the widest opening width and are available with vision panels as standard, and an option for double-swing hinges.

### Features and benefits

- › Maximum opening width
- › Ideal for communal areas
- › Available as double-swing

### Opening footprint



## Leaf-and-a-half

In areas where extra opening width is only an occasional need, leaf-and-a-half doorsets give you the best of both worlds: it's a single door until you need additional width.

### Features and benefits

- › Simple single door operation
- › Extra width available on demand
- › Easy to install

### Opening footprint



## Sliding

Where space is tight, sliding doors can make all the difference. Perfect where wide openings are needed.

### Features and benefits

- › No clearance needed
- › Space saving
- › Easy slide opening

### Opening footprint



# Hygidoor features

Hygidoor is supplied as a complete pre-hung doorset with many unique features.

- 1 Flush architrave style offers a combination of hygiene and aesthetics.
- 2 All Hygidoor frames are factory-mitred and bonded for on-site speed and accuracy.
- 3 Frames and doors have precut hinge recesses for ease of installation and on-site accuracy.
- 4 Comprehensive range of colours and finishes available. Colours can be combined on a single door using laser cutting technology for endless design opportunities.
- 5 Hyglaze™ flush glass vision panels are standard on all Hygidoors. Hygivision™ control panels are available as an option.
- 6 All Hygidoors feature an integrated seal which provides not only an intumescent seal but also a cold smoke and acoustic barrier and adds to the hygienic benefits of the doorset. Fire doors rated to 60 minutes feature additional seals.



Speak to a Trovex advisor for your project-tailored specification today.

**Call 01707 254 170**

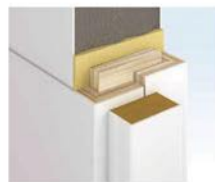
# Hygidoor frame types

Choose the standard three-piece frame for speed of installation, the extra-hygienic flush frame for easy cleaning or the double-swing frame when speedy access is critical.



## Standard three-piece frame

The standard three-piece frame incorporates an architrave style detail, enabling the existing wall surfaces to be neatly finished by the frame. In this situation, the door closes flush with the architrave.



## Extra-hygienic flush frame

The superior option for hygienic environments, flush frames offer ease of cleaning and an aesthetic appeal. With no architraves, this option allows the wall cladding to integrate almost seamlessly with the doorset, making hygienic maintenance effortless.



## Double-swing frame

The double-swing frame specifically suits the swing door option, with no doorstops. This is typically supplied with a pair of double doors, but can be fabricated to suit your application.

# Hygidoor core types

A choice of core types gives Hygidoor the edge in every demanding environment. Each door is carefully wrapped in Trovex hygienic PVC cladding. Choose a high density particleboard or laminate core, available with fire ratings of 30 or 60 minutes.



**Particleboard core**

Putting personal safety first, Hygidoor is tested for 30 and 60 minutes fire resistance for single and double doorsets with Hygiglaze™ glazing panels.



**Laminate core**

A lightweight and moisture resistant option, the laminate core accepts all standard door hardware. Available in fire ratings of 30 and 60 minutes resistance.



# Hygidoor glazing

## Hygiglaze™

With the unique flush glazing system as standard, a range of glazing options are available including circular, square and rectangular. Rounded corners offer a sophisticated appearance, and special shapes are possible.

Trovex Hygiglaze™ double door system has been put through one of the most rigorous fire resistance tests, the FD60. The assessment test was carried out at Exova Warrington Laboratory on the Hygiglaze™ double door system which was terminated after the Hygidoor withstood more than 60 minutes at a temperature of 950°C.

With a choice of configurations, you can include a glazing panel on a single door, double door, leaf-and-a-half or sliding door. There is a style to suit your specific requirements – your complete doorset solution.



## Hygivision™

Providing a clear view, Hygiglaze™ panels can be supplied in a number of standard sizes, or manufactured to your requirements. For healthcare environments, Hygivision™ control panels provide the needed surveillance and privacy with an adjustable glazing unit.



# Hygidoor options



## Visual contrast

To assist the partially sighted, contrasting door and frame colours give a clear visual break between the door and the frame. Get creative with colour!



## Door hardware

The finishing touch is added through the choice of the right door hardware. Provided with options of a pull handle and push plate in hygienic stainless steel, other options are available to suit your project. Anti-ligature handles, locks and hinges qualify Hygidoor for the most demanding healthcare applications.

## Need something a little different?

Hygidoors can be manufactured to your specific needs. State your required size and choose from the expansive Trovex colour collections.

Email your requirements to [sales@trovex.com](mailto:sales@trovex.com) or call 01707 254 170



# Hygidoor colours & finishes

## Diamond

Available in the full range of colours, Diamond gives your Hygidoor the most elegant appearance.

## Activ:ion

Actively combating bacteria is the key to a sterile environment. Choose Activ:ion for hygiene-critical areas.

## Resilience

Textured finish offers a high level of impact protection, hiding minor scratches and fending off daily knocks.

Available colours and finishes, see pages 84 - 89 for details:

White Satin

Ambience Satin

Radiance Satin

Essence Satin

Brilliance High Gloss

Resilience Textured



# Build-a-Door™

While the choice of options for Hygidoor is vast, the creation of your chosen doorset is simple. Follow the steps below to build your own door.



## 1 Choose a door style

- › Single
- › Double
- › Leaf-and-a-half
- › Sliding

Page 54



## 2 Choose a frame type

- › Standard three-piece
- › Extra hygienic flush
- › Double-swing

Page 57



## 3 Choose a core type

- › Particleboard
- › Laminate
- › 30 or 60 minute fire rating

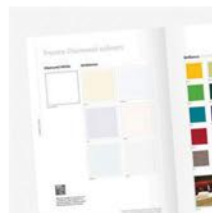
Page 58



## 4 Choose a finish

- › Diamond
- › Activation
- › Resilience

Page 64



## 5 Choose a colour

- › Ambience
- › Radiance
- › Brilliance
- › Essence
- › Resilience
- › White

Page 64



## 6 Choose your additions

- › Hygligaze™ panels
- › Hygivision™ control panels
- › Anti-ligature ironmongery
- › Double-swing door hinge
- › Door closers

Page 60

Speak to a Trovex advisor for your project-tailored specification today **01707 254 170**